



Cloud-Clone Corp.

Cloud-Clone ELISA Kits

- Strict Quality Control
- Stable Supply
- Professional Service

Product Advantages



International Quality, Local Price

- Benchmarking international performance with reliable data
- Unbeatable value to cut research costs effectively



Global Recognition, Research Boost

- Over 42,000 SCI citations, solid research foundation
- Over 350 publications of nature, science and cell



All-Round Service for Worry-Free Research

- Full pre- and post-sales technical support
- Professional team of responds within 24 hours
- Flexible customization and fast logistics

ELISA Kit Types



Common kit

For most species & samples, protein & small molecules



Mini kit

25 μ L sample, for small animals, eg: mouse, zebra fish...



Instant kit

70 mins: 1/4 to 1/3 of regular kit



High-sensitive kit

sensitivity to 1pg/mL



Wide-range kit

Wider detection range



Antibody detection kit

For antibody detection

Cloud-Clone Gold Series ELISA Kit

• Stable raw material batches

• Excellent test assay data

Product No.	Product Name	Product No.	Product Name
SEA133Hu	ELISA Kit for Tumor Necrosis Factor Alpha (TNFa)	SEL231Hu	ELISA Kit for Alpha-2-Glycoprotein 1, Zinc Binding (aZGP1)
SEA079Hu	ELISA Kit for Interleukin 6 (IL6)	CEA957Hu	ELISA Kit for Procollagen I N-Terminal Propeptide (PINP)
SEB526Ge	ELISA Kit for Lipopolysaccharide (LPS)	SEA077Ra	ELISA Kit for Interleukin 4 (IL4)
SEA563Hu	ELISA Kit for Interleukin 1 Beta (IL1b)	SEE912Hu	ELISA Kit for Sirtuin 1 (SIRT1)
CEA808Ge	ELISA Kit for 5-Hydroxytryptamine (5-HT)	SEA077Hu	ELISA Kit for Interleukin 4 (IL4)
SEB070Hu	ELISA Kit for Tryptase (TPS)	SEB097Hu	ELISA Kit for Motility Related Protein (MRP1)
SEA957Hu	ELISA Kit for Procollagen I N-Terminal Propeptide (PINP)	SEA105Hu	ELISA Kit for Nerve Growth Factor (NGF)
SEA048Hu	ELISA Kit for Inhibin Beta E (INHbE)	SEA122Hu	ELISA Kit for Stromal Cell Derived Factor 1 (SDF1)
SEA056Hu	ELISA Kit for Interleukin 10 (IL10)	SEA033Hu	ELISA Kit for Interferon Alpha (IFNa)
SEA250Po	ELISA Kit for Trypsin (TRY)	SEA518Hu	ELISA Kit for Ferritin (FE)
SEA553Hu	ELISA Kit for Matrix Metalloproteinase 9 (MMP9)	SEA909Hu	ELISA Kit for Ceruloplasmin (CP)
SEA080Hu	ELISA Kit for Interleukin 8 (IL8)	SEA563Po	ELISA Kit for Interleukin 1 Beta (IL1b)
SEA084Hu	ELISA Kit for Leptin (LEP)	SEA832Hu	ELISA Kit for Plasmin/Antiplasmin Complex (PAP)
SEA049Hu	ELISA Kit for Interferon Gamma (IFNg)	CEA911Ge	ELISA Kit for Aldosterone (ALD)
SEA056Ra	ELISA Kit for Interleukin 10 (IL10)	SEA222Hu	ELISA Kit for Interferon Beta (IFNb)
SEA050Hu	ELISA Kit for Insulin Like Growth Factor 1 (IGF1)	SEA106Hu	ELISA Kit for Neurotrophin 3 (NT3)
SEA601Hu	ELISA Kit for Myeloperoxidase (MPO)	SEA539Hu	ELISA Kit for Myelin Basic Protein (MBP)
SEB337Hu	ELISA Kit for Elastin (ELN)	SEC003Hu	ELISA Kit for Apolipoprotein B (APOB)
CEA453Ge	ELISA Kit for Triiodothyronine (T3)	SEA095Hu	ELISA Kit for Macrophage Inflammatory Protein 3 Alpha (MIP3a)
CEA916Ge	ELISA Kit for Vitamin B6 (VB6)	SEA183Hu	ELISA Kit for Galactosidase Alpha (GLa)
SEB388Hu	ELISA Kit for Neutrophil Gelatinase Associated Lipocalin (NGAL)	SEC147Hu	ELISA Kit for Collagen Type VII (COL7)
SEA798Hu	ELISA Kit for Hypoxia Inducible Factor 1 Alpha (HIF1a)	SEA073Ra	ELISA Kit for Interleukin 2 (IL2)
SEA395Hu	ELISA Kit for Inhibin A (INHA)	CEA877Ge	ELISA Kit for Thromboxane B2 (TXB2)
SEA478Ra	ELISA Kit for Troponin I Type 3, Cardiac (TNNI3)	SEA816Hu	Human Alpha-1-Acid Glycoprotein (a1AGP) ELISA Kit
SEE038Hu	ELISA Kit for Neurofilament, Light Polypeptide (NEFL)	SEB252Ra	ELISA Kit for Androgen Receptor (AR)
CEA541Ra	ELISA Kit for Brain Natriuretic Peptide (BNP)	SEA582Hu	ELISA Kit for Aquaporin 4 (AQP4)
SEA280Hu	ELISA Kit for Calnexin (CNX)	SEA006Hu	ELISA Kit for Amphiregulin (AREG)
SEA567Hu	ELISA Kit for S100 Calcium Binding Protein B (S100B)	SEA560Ra	ELISA Kit for Epidermal Growth Factor (EGF)
SEA063Hu	ELISA Kit for Interleukin 17 (IL17)	SEA544Ov	ELISA Kit for Immunoglobulin G (IgG)
CEB052Ge	ELISA Kit for Oxytocin (OT)	CEA005Ra	ELISA Kit for Angiotensin II (AngII)
SEA821Hu	ELISA Kit for C Reactive Protein (CRP)	SEB997Hu	ELISA Kit for Apolipoprotein A5 (APOA5)
SEA109Hu	ELISA Kit for Creatine Kinase, Muscle (CKM)	SEA471Hu	ELISA Kit for Osteocalcin (OC)
SEA756Hu	ELISA Kit for Mucin 5 Subtype AC (MUC5AC)	SEA387Hu	ELISA Kit for Complement Component 3a (C3a)
CEA665Hu	ELISA Kit for Cross Linked C-Telopeptide Of Type I Collagen (CTXI)	CEA005Mu	ELISA Kit for Angiotensin II (AngII)
SEA780Hu	ELISA Kit for Lactoferrin (LTF)	SEA847Hu	ELISA Kit for Resistin (RETN)
SEA087Hu	ELISA Kit for Monocyte Chemotactic Protein 1 (MCP1)	CEV692Ge	ELISA kit for Aflatoxin B1
CEA005Hu	ELISA Kit for Angiotensin II (AngII)	SEL763Hu	ELISA Kit for Myxovirus Resistance 1 (MX1)
CEA190Mu	ELISA Kit for Glycated Hemoglobin A1c (HbA1c)	CEA447Mu	ELISA Kit for C-Peptide (CP)
SEA033Ra	ELISA Kit for Interferon Alpha (IFNa)	CEB084Hu	ELISA Kit for Galanin (GAL)

Cloud-Clone Gold Series ELISA Kit

Product No.	Product Name	Product No.	Product Name
SEA638Hu	ELISA Kit for Visfatin (VF)	SEA778Hu	ELISA Kit for B-Cell Leukemia/Lymphoma 2 (Bcl2)
SEB758Hu	ELISA Kit for Ribonuclease A3 (RNASE3)	SEA480Hu	ELISA Kit for Myoglobin (MYO)
SEA084Bo	ELISA Kit for Leptin (LEP)	SEB949Hu	ELISA Kit for Transforming Growth Factor Beta 3 (TGFb3)
SEA370Hu	ELISA Kit for Chemokine (C-X-C motif) ligand 7 (CXCL7)	SEA044Hu	ELISA Kit for Growth Hormone (GH)
SEB080Hu	ELISA Kit for S100 Calcium Binding Protein A12 (S100A12)	SEB246Hu	ELISA Kit for Cytokeratin Fragment Antigen 21-1 (CYFRA21-1)
SEA080Ga	ELISA Kit for Interleukin 8 (IL8)	SEA063Po	ELISA Kit for Interleukin 17 (IL17)
SEA396Hu	ELISA Kit for Sex Hormone Binding Globulin (SHBG)	SEA049Rb	ELISA Kit for Interferon Gamma (IFNg)
SEA193Hu	ELISA Kit for Fibrinogen (FG)	SEC585Hu	ELISA Kit for Urocortin 2 (UCN2)
SEA207Hu	ELISA Kit for Alanine Aminotransferase (ALT)	SEA222Ga	ELISA Kit for Interferon Beta (IFNb)
SEA766Hu	ELISA Kit for A Disintegrin And Metalloprotease 10 (ADAM10)	SEE528Hu	ELISA Kit for Phosphoglycerate Mutase 1, Brain (PGAM1)
SEA080Ca	ELISA Kit for Interleukin 8 (IL8)	SEA074Hu	ELISA Kit for Immunoglobulin G1 (IgG1)
SEA071Hu	ELISA Kit for Interleukin 1 Alpha (IL1a)	SEA822Hu	ELISA Kit for Heat Shock 60kD Protein 1, Chaperonin (HSPD1)
SEB809Hu	ELISA Kit for Selenoprotein P1, Plasma (SEPP1)	CEA573Hu	ELISA Kit for Procollagen III N-Terminal Propeptide (PIIINP)
SEB980Hu	ELISA Kit for Interleukin 33 (IL33)	CEA639Hu	ELISA Kit for Cross Linked N-Telopeptide Of Type I Collagen (NTXI)
SEA831Hu	ELISA Kit for Thrombin/Antithrombin Complex (TAT)	CEA639Ra	ELISA Kit for Cross Linked N-Telopeptide Of Type I Collagen (NTXI)
SEB667Hu	ELISA Kit for Titin (TTN)	SED418Hu	ELISA Kit for Myosin Heavy Chain 7, Cardiac Muscle, Beta (MYH7)
SEH145Hu	ELISA Kit for Serine Peptidase Inhibitor Kazal Type 5 (SPINK5)	SEA134Hu	ELISA Kit for Tumor Necrosis Factor Beta (TNFb)
CEC022Ge	ELISA Kit for Reverse Triiodothyronine (rT3)	SEC029Hu	ELISA Kit for Interleukin 29 (IL29)
CEA541Mu	ELISA Kit for Brain Natriuretic Peptide (BNP)	SEA425Hu	ELISA Kit for Synaptophysin (SYP)
CEA915Ge	ELISA Kit for 25-Hydroxyvitamin D3 (HVD3)	CEA447Hu	ELISA Kit for C-Peptide (CP)
SEB040Hu	ELISA Kit for Vimentin (VIM)	SEB882Hu	ELISA Kit for Fibroblast Growth Factor 10 (FGF10)
SEA525Hu	ELISA Kit for Plasminogen Activator, Tissue (tPA)	SEE913Ra	ELISA Kit for Sirtuin 3 (SIRT3)
SEB449Hu	ELISA Kit for Enolase, Non Neuronal (NNE)	CEA874Mu	ELISA Kit for Bradykinin (BK)
SEA049Ga	ELISA Kit for Interferon Gamma (IFNg)	SEC006Hu	ELISA Kit for Interleukin 8 Receptor Beta (IL8Rb)
SEA021Hu	ELISA Kit for Ciliary Neurotrophic Factor (CNTF)	SEB990Hu	ELISA Kit for Toll Like Receptor 5 (TLR5)
CEA543Mu	ELISA Kit for Immunoglobulin M (IgM)	SEF558Hu	ELISA Kit for Uroplakin 3A (UPK3A)
SEB822Hu	ELISA Kit for Keratin 17 (KRT17)	CEA874Ra	ELISA Kit for Bradykinin (BK)
SEB214Hu	ELISA Kit for Aspartate Aminotransferase (AST)	SEA373Hu	ELISA Kit for Desmin (Des)
CEA544Ra	ELISA Kit for Immunoglobulin G (IgG)	SEC313Hu	ELISA Kit for Antithrombin (AT)
SEC775Hu	ELISA Kit for Reelin (RL)	SEB798Hu	ELISA Kit for Cluster Of Differentiation 5 (CD5)
CEA447Ra	ELISA Kit for C-Peptide (CP)	SEA143Po	ELISA Kit for Vascular Endothelial Growth Factor A (VEGFA)
SEP155Hu	ELISA Kit for Wingless Type MMTV Integration Site Family, Member 3A (WNT3A)	SEE676Hu	ELISA Kit for Regenerating Islet Derived Protein 3 Gamma (REG3g)
SEC143Hu	ELISA Kit for Collagen Type IV Alpha 3 (COL4a3)	SEB540Hu	ELISA Kit for Extracellular Matrix Metalloproteinase Inducer (EMMPRN)
SEB697Hu	ELISA Kit for Alpha-1-Antitrypsin (a1AT)	SEA123Hu	ELISA Kit for Transforming Growth Factor Alpha (TGFA)
SEB908Hu	ELISA Kit for Aggrecan (AGC)	SEE916Mu	ELISA Kit for Sirtuin 6 (SIRT6)
SEA799Hu	ELISA Kit for Bone Morphogenetic Protein 7 (BMP7)	SEB014Hu	ELISA Kit for Integrin Associated Protein (IAP)
SEB944Hu	ELISA Kit for Annexin A2 (ANXA2)	SEB250Hu	ELISA Kit for 5'-Nucleotidase, Ecto (NT5E)
SEA041Ra	ELISA Kit for Neutrophil Activating Protein 3 (NAP3)	SEH839Hu	ELISA Kit for Isocitrate Dehydrogenase 1, Soluble (IDH1)
SEA523Hu	ELISA Kit for Platelet Derived Growth Factor AA (PDGFAA)	CEA573Mu	ELISA Kit for Procollagen III N-Terminal Propeptide (PIIINP)
SEC285Hu	ELISA Kit for Anterior Gradient 2 (AGR2)	SEA063Rb	ELISA Kit for Interleukin 17 (IL17)
CEA541Hu	ELISA Kit for Brain Natriuretic Peptide (BNP)	SEA895Hu	ELISA Kit for Insulin Receptor (INSR)

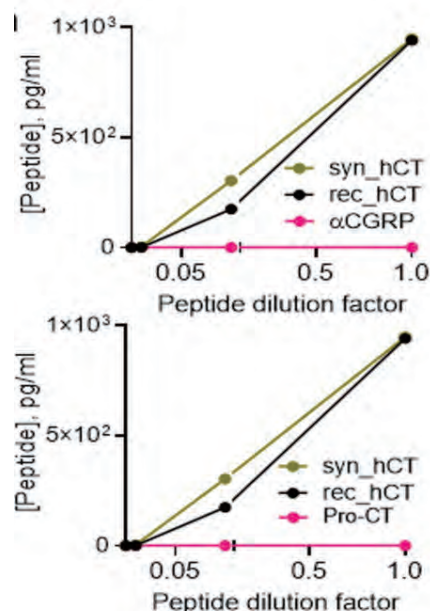
TOP Citations of Cloud-Clone ELISA Kits

Paracrine signalling by cardiac calcitonin controls atrial fibrogenesis and arrhythmia (PMID: 33149301)

Nature. 10.1038/s41586-020-2890-8

drex) as previously described³². The levels of human CT in cell supernatant was quantified using ELISA (CEA472Hu, Cloud-Clone) with a detection range of 12.35–1,000 pg/ml and lowest detectable level of less than 4.74 pg/ml; experimental recovery of cellular secretome matrix was 98% on average. This kit did not show any cross-reactivity with α CGRP or pro-CT (Extended Data Fig. 8h, i). Concentration of human

CT ELISA kit confirms detection of human recombinant (in black) or synthetic CT (in green) in concentration-dependent manner with no cross-reactivity with recombinant human α CGRP or recombinant human pro-CT (in magenta) at serial dilutions.



Product No.	Product Name	Journal	IF	PMID
SEA831Mu	ELISA Kit for Thrombin/Antithrombin Complex (TAT)	Nature	64.8	22407318
CEA957Hu	ELISA Kit for Procollagen I N-Terminal Propeptide (PINP)	Nature	64.8	30185903
CEX053Ge	ELISA Kit for Spermidine (SMD)	Nature	64.8	32238926
CEA453Ge	ELISA Kit for Triiodothyronine (T3)	Nature	64.8	33177714
CEA452Ge	ELISA Kit for Thyroxine (T4)	Nature	64.8	33177714
SCA133Mu	CLIA Kit for Tumor Necrosis Factor Alpha (TNFa)	Nature	64.8	33177714
CEA463Mu	ELISA Kit for Thyroid Stimulating Hormone (TSH)	Nature	64.8	33177714
CEB075Mu	ELISA Kit for Secretin (SCT)	Nature	64.8	33177714
CEA858Ge	ELISA Kit for Epinephrine (EPI)	Nature	64.8	33177714
CEA907Ge	ELISA Kit for Noradrenaline (NE)	Nature	64.8	33177714
CEV806Ge	ELISA Kit for Creatinine (CTN)	Nature	64.8	33177714
CEA472Hu	ELISA Kit for Calcitonin (CT)	Nature	64.8	33149301
SEA785Mu	ELISA Kit for Kidney Injury Molecule 1 (Kim1)	Nature	64.8	40108452
SEA552Mu	ELISA Kit for Tissue Inhibitors Of Metalloproteinase 1 (TIMP1)	Nature	64.8	40108452
SEB388Mu	ELISA Kit for Neutrophil gelatinase-associated lipocalin (NGAL)	Nature	64.8	40108452
SEA899Mu	ELISA Kit for Osteopontin (OPN)	Nature	64.8	40108452
SED022Mu	ELISA Kit for Fibrinogen Like Protein 1 (FGL1)	Cell	64.5	30454647
CEB075Mu	ELISA Kit for Secretin (SCT)	Cell	64.5	30449620
CEB075Hu	ELISA Kit for Secretin (SCT)	Cell	64.5	30449620
SED522Hu	ELISA Kit for Heat Shock Protein 90kDa Alpha B1 (HSP90aB1)	Cell	64.5	32649877
CEA665Mu	ELISA Kit for Cross Linked C-Telopeptide Of Type I Collagen (CTXI)	Cell	64.5	32640190
CEA802Mu	ELISA Kit for Cholecystokinin (CCK)	Cell	64.5	36669474
SED038Mu	ELISA Kit for Immunoglobulin Kappa (Ilgk)	Cell	64.5	39500323

Citations of Cloud-Clone ELISA Kits

Product No	Product Name	Citations	Product No	Product Name	Citations
SEA133Ra	ELISA Kit for Tumor Necrosis Factor Alpha (TNFa)	447	SEA124Ra	ELISA Kit for Transforming Growth Factor Beta 1 (TGFb1)	84
SEA079Ra	ELISA Kit for Interleukin 6 (IL6)	397	CEA908Ge	ELISA Kit for Melatonin (MT)	83
SEA563Ra	ELISA Kit for Interleukin 1 Beta (IL1b)	395	CEA540Ge	ELISA Kit for Corticosterone (Cort)	78
SEA133Mu	ELISA Kit for Tumor Necrosis Factor Alpha (TNFa)	363	CEA294Ge	ELISA Kit for Glutathione (GSH)	74
SEA079Mu	ELISA Kit for Interleukin 6 (IL6)	327	SEA064Ra	ELISA Kit for Interleukin 18 (IL18)	73
SEA563Mu	ELISA Kit for Interleukin 1 Beta (IL1b)	281	CEA441Ra	ELISA Kit for Luteinizing Hormone (LH)	73
SEA133Hu	ELISA Kit for Tumor Necrosis Factor Alpha (TNFa)	266	CEA441Mu	ELISA Kit for Luteinizing Hormone (LH)	72
SEA079Hu	ELISA Kit for Interleukin 6 (IL6)	244	SEA080Hu	ELISA Kit for Interleukin 8 (IL8)	71
CEA461Ge	ELISA Kit for Estradiol (E2)	179	SEA124Hu	ELISA Kit for Transforming Growth Factor Beta 1 (TGFb1)	69
SEA056Mu	ELISA Kit for Interleukin 10 (IL10)	159	SEA573Hu	ELISA Kit for Procollagen III N-Terminal Propeptide (PIIINP)	69
SEA563Hu	ELISA Kit for Interleukin 1 Beta (IL1b)	158	SEA100Hu	ELISA Kit for Matrix Metalloproteinase 2 (MMP2)	66
CEA597Ge	ELISA Kit for Malondialdehyde (MDA)	152	SEA571Hu	ELISA Kit for Collagen Type I (COL1)	65
SEA056Ra	ELISA Kit for Interleukin 10 (IL10)	136	SEA778Ra	ELISA Kit for B-Cell Leukemia/Lymphoma 2 (Bcl2)	62
CEA448Ra	ELISA Kit for Insulin (INS)	127	CEA830Mu	ELISA Kit for Follicle Stimulating Hormone (FSH)	62
CEA458Ge	ELISA Kit for Testosterone (Testo)	126	SEA399Mu	ELISA Kit for High Mobility Group Protein 1 (HMG1)	61
CEA448Mu	ELISA Kit for Insulin (INS)	116	SEB824Ra	ELISA Kit for Nuclear Factor Kappa B (NFkB)	60
CEA538Ge	ELISA Kit for Prostaglandin E2 (PGE2)	107	SEC845Hu	ELISA Kit for Renalase (RNLS)	60
SEA049Mu	ELISA Kit for Interferon Gamma (IFNg)	106	CEA459Ge	ELISA Kit for Progesterone (PG)	60
SEA399Hu	ELISA Kit for High Mobility Group Protein 1 (HMG1)	105	CEA851Ge	ELISA Kit for Dopamine (DA)	59
SEB526Ge	ELISA Kit for Lipopolysaccharide (LPS)	105	SEA133Rb	ELISA Kit for Tumor Necrosis Factor Alpha (TNFa)	58
CEA660Ge	ELISA Kit for 8-Hydroxydeoxyguanosine (8-OHdG)	105	SEA124Mu	ELISA Kit for Transforming Growth Factor Beta 1 (TGFb1)	58
SEA553Hu	ELISA Kit for Matrix Metalloproteinase 9 (MMP9)	103	CEB353Ge	ELISA Kit for Advanced Glycation End Product (AGE)	57
SEA626Ra	ELISA Kit for Caspase 3 (CASP3)	101	SEA064Hu	ELISA Kit for Interleukin 18 (IL18)	55
SEA143Hu	ELISA Kit for Vascular Endothelial Growth Factor A (VEGFA)	101	CEA907Ge	ELISA Kit for Noradrenaline (NE)	55
CEA452Ge	ELISA Kit for Thyroxine (T4)	99	SEH339Hu	ELISA Kit for Periostin (POSTN)	51
SEA056Hu	ELISA Kit for Interleukin 10 (IL10)	96	SEA471Mu	ELISA Kit for Osteocalcin (OC)	50
CEA830Ra	ELISA Kit for Follicle Stimulating Hormone (FSH)	89	SEA788Hu	ELISA Kit for Programmed Cell Death Protein 1 Ligand 1 (PDL1)	50
CEA453Ge	ELISA Kit for Triiodothyronine (T3)	86	CEA665Mu	ELISA Kit for Cross Linked C-Telopeptide Of Type I Collagen (CTXI)	50
SEA077Mu	ELISA Kit for Interleukin 4 (IL4)	84	CEA005Ra	ELISA Kit for Angiotensin II (AngII)	50

Cloud-Clone Hot Series ELISA Kit

Product No.	Product Name	Product No.	Product Name
SEA133Ra	ELISA Kit for Tumor Necrosis Factor Alpha (TNFa)	CEA830Mu	ELISA Kit for Follicle Stimulating Hormone (FSH)
SEA079Ra	ELISA Kit for Interleukin 6 (IL6)	SEA778Ra	ELISA Kit for B-Cell Leukemia/Lymphoma 2 (Bcl2)
SEA563Ra	ELISA Kit for Interleukin 1 Beta (IL1b)	SEA399Mu	ELISA Kit for High Mobility Group Protein 1 (HMG1)
SEA133Mu	ELISA Kit for Tumor Necrosis Factor Alpha (TNFa)	CEA459Ge	ELISA Kit for Progesterone (PG)
SEA079Mu	ELISA Kit for Interleukin 6 (IL6)	SEB824Ra	ELISA Kit for Nuclear Factor Kappa B (NFkB)
SEA563Mu	ELISA Kit for Interleukin 1 Beta (IL1b)	SEC845Hu	ELISA Kit for Renalase (RNLS)
SEA133Hu	ELISA Kit for Tumor Necrosis Factor Alpha (TNFa)	CEA851Ge	ELISA Kit for Dopamine (DA)
SEA079Hu	ELISA Kit for Interleukin 6 (IL6)	SEA124Mu	ELISA Kit for Transforming Growth Factor Beta 1 (TGFb1)
CEA461Ge	ELISA Kit for Estradiol (E2)	SEA133Rb	ELISA Kit for Tumor Necrosis Factor Alpha (TNFa)
SEA056Mu	ELISA Kit for Interleukin 10 (IL10)	CEB353Ge	ELISA Kit for Advanced Glycation End Product (AGE)
SEA563Hu	ELISA Kit for Interleukin 1 Beta (IL1b)	CEA907Ge	ELISA Kit for Noradrenaline (NE)
CEA597Ge	ELISA Kit for Malondialdehyde (MDA)	SEA064Hu	ELISA Kit for Interleukin 18 (IL18)
SEA056Ra	ELISA Kit for Interleukin 10 (IL10)	SEH339Hu	ELISA Kit for Periostin (POSTN)
CEA448Ra	ELISA Kit for Insulin (INS)	CEA665Mu	ELISA Kit for Cross Linked C-Telopeptide Of Type I Collagen (CTXI)
CEA458Ge	ELISA Kit for Testosterone (Testo)	SEA471Mu	ELISA Kit for Osteocalcin (OC)
CEA448Mu	ELISA Kit for Insulin (INS)	SEA788Hu	ELISA Kit for Programmed Cell Death Protein 1 Ligand 1 (PDL1)
CEA538Ge	ELISA Kit for Prostaglandin E2 (PGE2)	CEA005Ra	ELISA Kit for Angiotensin II (AngII)
SEA049Mu	ELISA Kit for Interferon Gamma (IFNg)	SEA049Hu	ELISA Kit for Interferon Gamma (IFNg)
SEB526Ge	ELISA Kit for Lipopolysaccharide (LPS)	SEA063Hu	ELISA Kit for Interleukin 17 (IL17)
SEA399Hu	ELISA Kit for High Mobility Group Protein 1 (HMG1)	CEA462Ge	ELISA Kit for Cortisol (Cor)
CEA660Ge	ELISA Kit for 8-Hydroxydeoxyguanosine (8-OHdG)	SEA605Hu	ELISA Kit for Adiponectin (ADP)
SEA553Hu	ELISA Kit for Matrix Metalloproteinase 9 (MMP9)	SEA063Mu	ELISA Kit for Interleukin 17 (IL17)
SEA143Hu	ELISA Kit for Vascular Endothelial Growth Factor A (VEGFA)	SEA133Bo	ELISA Kit for Tumor Necrosis Factor Alpha (TNFa)
SEA626Ra	ELISA Kit for Caspase 3 (CASP3)	CEA808Ge	ELISA Kit for 5-Hydroxytryptamine (5-HT)
CEA452Ge	ELISA Kit for Thyroxine (T4)	SEA821Hu	ELISA Kit for C Reactive Protein (CRP)
SEA056Hu	ELISA Kit for Interleukin 10 (IL10)	SEA084Hu	ELISA Kit for Leptin (LEP)
CEA830Ra	ELISA Kit for Follicle Stimulating Hormone (FSH)	SEA485Hu	ELISA Kit for N-Terminal Pro-Brain Natriuretic Peptide (NT-ProBNP)
CEA453Ge	ELISA Kit for Triiodothyronine (T3)	CEA003Ge	ELISA Kit for Cyclic Adenosine Monophosphate (cAMP)
SEA124Ra	ELISA Kit for Transforming Growth Factor Beta 1 (TGFb1)	SES134Hu	ELISA Kit for Superoxide Dismutases (SOD)
SEA077Mu	ELISA Kit for Interleukin 4 (IL4)	SEA798Hu	ELISA Kit for Hypoxia Inducible Factor 1 Alpha (HIF1a)
CEA908Ge	ELISA Kit for Melatonin (MT)	CEB526Ge	ELISA Kit for Lipopolysaccharide (LPS)
CEA540Ge	ELISA Kit for Corticosterone (Cort)	SEA079Bo	ELISA Kit for Interleukin 6 (IL6)
CEA294Ge	ELISA Kit for Glutathione (GSH)	SEB388Hu	ELISA Kit for Neutrophil Gelatinase Associated Lipocalin (NGAL)
CEA441Ra	ELISA Kit for Luteinizing Hormone (LH)	SEA601Mu	ELISA Kit for Myeloperoxidase (MPO)
SEA064Ra	ELISA Kit for Interleukin 18 (IL18)	CEA463Mu	ELISA Kit for Thyroid Stimulating Hormone (TSH)
CEA441Mu	ELISA Kit for Luteinizing Hormone (LH)	CEA900Ge	ELISA Kit for Gamma-Aminobutyric Acid (gABA)
SEA080Hu	ELISA Kit for Interleukin 8 (IL8)	SEA785Hu	ELISA Kit for Kidney Injury Molecule 1 (Kim1)
SEA124Hu	ELISA Kit for Transforming Growth Factor Beta 1 (TGFb1)	SEA756Hu	ELISA Kit for Mucin 5 Subtype AC (MUC5AC)
SEA573Hu	ELISA Kit for Procollagen III N-Terminal Propeptide (PIIINP)	CEA927Ge	ELISA Kit for Histamine (HA)
SEA100Hu	ELISA Kit for Matrix Metalloproteinase 2 (MMP2)	SEA957Mu	ELISA Kit for Procollagen I N-Terminal Propeptide (PINP)
SEA571Hu	ELISA Kit for Collagen Type I (COL1)	SEA957Hu	ELISA Kit for Procollagen I N-Terminal Propeptide (PINP)

Cloud-Clone Hot Series ELISA Kit

Product No.	Product Name	Product No.	Product Name
SEA873Hu	ELISA Kit for Heat Shock Protein 70 (HSP70)	CEG031Ge	ELISA Kit for Sphingosine-1-Phosphate (S1P)
SEA011Hu	ELISA Kit for Brain Derived Neurotrophic Factor (BDNF)	HEA821Hu	High Sensitive ELISA Kit for C Reactive Protein (CRP)
SEA601Hu	ELISA Kit for Myeloperoxidase (MPO)	CEG414Ge	ELISA Kit for S-Adenosyl Methionine (SAM)
CEA182Ge	ELISA Kit for Hyaluronic Acid (HA)	SEA102Hu	ELISA Kit for Matrix Metalloproteinase 7 (MMP7)
CEA804Mi	ELISA Kit for Glucagon Like Peptide 1 (GLP1)	CED984Ge	ELISA Kit for Homocysteine (HCy)
SEB406Hu	ELISA Kit for Lipopolysaccharide Binding Protein (LBP)	CEA365Mu	ELISA Kit for Copeptin (CPP)
SEA478Ra	ELISA Kit for Troponin I Type 3, Cardiac (TNNI3)	SEB793Hu	ELISA Kit for S100 Calcium Binding Protein A9 (S100A9)
CEA228Mu	ELISA Kit for Anti-Mullerian Hormone (AMH)	SEA350Hu	ELISA Kit for Collagen Type I Alpha 1 (COL1a1)
CEA991Hu	ELISA Kit for Ghrelin (GHLR)	SEB388Mu	ELISA Kit for Neutrophil Gelatinase Associated Lipocalin (NGAL)
SEA011Ra	ELISA Kit for Brain Derived Neurotrophic Factor (BDNF)	SEC034Hu	ELISA Kit for Growth Differentiation Factor 15 (GDF15)
SEA050Hu	ELISA Kit for Insulin Like Growth Factor 1 (IGF1)	CEO777Ge	ELISA Kit for Butyric Acid (BA)
CEA665Hu	ELISA Kit for Cross Linked C-Telopeptide Of Type I Collagen (CTXI)	SEB337Hu	ELISA Kit for Elastin (ELN)
CEA482Hu	ELISA Kit for Endothelin 1 (EDN1)	CEA190Hu	ELISA Kit for Glycated Hemoglobin A1c (HbA1c)
SEA570Hu	ELISA Kit for Procollagen I C-Terminal Propeptide (PICP)	SEA641Hu	ELISA Kit for Secretory Immunoglobulin A (sIgA)
CEA858Ge	ELISA Kit for Epinephrine (EPI)	SEE038Hu	ELISA Kit for Neurofilament, Light Polypeptide (NEFL)
CEA876Hu	ELISA Kit for Calcitonin Gene Related Peptide (CGRP)	CEK552Ge	ELISA Kit for Quinolinic Acid (QA)
CEA541Ra	ELISA Kit for Brain Natriuretic Peptide (BNP)	SEH757Mu	ELISA Kit for Klotho (KL)
SEH757Hu	ELISA Kit for KLOTHO (KL)	SEA332Hu	ELISA Kit for Asprosin
SEA478Mu	ELISA Kit for Troponin I Type 3, Cardiac (TNNI3)	CED051Ge	ELISA Kit for Retinol (Ret)
SEA567Hu	ELISA Kit for S100 Calcium Binding Protein B (S100B)	SEA387Mu	ELISA Kit for Complement Component 3a (C3a)
SEA571Mu	ELISA Kit for Collagen Type I (COL1)	SEB969Hu	ELISA Kit for Complement Component 5 (C5)
CEA506Mu	ELISA Kit for D-Dimer (D2D)	SEB966Hu	ELISA Kit for Syndecan 1 (SDC1)
SEA222Mu	ELISA Kit for Interferon Beta (IFNβ)	CEB028Hu	ELISA Kit for Albumin (ALB)
SEA545Mu	ELISA Kit for Immunoglobulin E (IgE)	SEA386Hu	ELISA Kit for Lipase, Lipoprotein (LIPD)
CEA463Ra	ELISA Kit for Thyroid Stimulating Hormone (TSH)	SEB480Hu	ELISA Kit for Mannose Binding Lectin (MBL)
SEB966Ra	ELISA Kit for Syndecan 1 (SDC1)	SEA726Hu	ELISA Kit for Transthyretin (TTR)
CEA912Ge	ELISA Kit for Acetylcholine (ACH)	SEJ103Hu	ELISA Kit for Filaggrin (FLG)
CEA946Hu	ELISA Kit for Amyloid Beta Peptide 1-42 (Ab1-42)	SEB656Hu	ELISA Kit for Trefoil Factor 3, Intestinal (TFF3)
CEB052Ge	ELISA Kit for Oxytocin (OT)	CEV538Ge	ELISA Kit for Taurine (Tau)
SEA303Hu	ELISA Kit for Galectin 3 (GAL3)	CEK621Ge	ELISA Kit for Lysophosphatidylcholine (LPC)
CEX132Hu	ELISA Kit for Mitochondrial Open Reading Frame Of The 12S rRNA-c (MOTS-c)	CEA686Hu	ELISA Kit for Cross Linked C-Telopeptide Of Type II Collagen (CTXII)
SEA050Bo	ELISA Kit for Insulin Like Growth Factor 1 (IGF1)	MEA133Mu	Mini Samples ELISA Kit for Tumor Necrosis Factor Alpha (TNFα)
CEA806Hu	ELISA Kit for Beta-Endorphin (bEP)	CEA922Ge	ELISA Kit for Alpha-Tocopherol (TCPα)
SEA068Hu	ELISA Kit for Glial Fibrillary Acidic Protein (GFAP)	CEA737Ge	ELISA Kit for Indole 3 Acetic Acid (IAA)
SEA176Hu	ELISA Kit for Collagen Type III (COL3)	SEC387Hu	ELISA Kit for Charcot Leyden Crystal Protein (CLC)
CEA349Ge	ELISA Kit for Adenosine Triphosphate (ATP)	SEA780Hu	ELISA Kit for Lactoferrin (LTF)
CEA365Hu	ELISA Kit for Copeptin (CPP)	SEA656Hu	ELISA Kit for Diamine Oxidase (DAO)
SEA641Mu	ELISA Kit for Secretory Immunoglobulin A (sIgA)	CEK623Ge	ELISA Kit for Lysophosphatidic Acid (LPA)
SEA890Hu	ELISA Kit for Surfactant Associated Protein A (SPA)	CEA228Bo	ELISA Kit for Anti-Mullerian Hormone (AMH)
SEA563Ga	ELISA Kit for Interleukin 1 Beta (IL1β)	CEA916Ge	ELISA Kit for Vitamin B6 (VB6)
SEB070Hu	ELISA Kit for Tryptase (TPS)	SEA050Ca	ELISA Kit for Insulin Like Growth Factor 1 (IGF1)

Cloud-Clone Hot Series ELISA Kit

Product No.	Product Name	Product No.	Product Name
SEB482Hu	ELISA Kit for Amylase Alpha 1, Salivary (AMY1)	SEB966Po	ELISA Kit for Syndecan 1 (SDC1)
CEA505Ge	ELISA Kit for Citrulline (Cit)	SEA785Po	ELISA Kit for Kidney Injury Molecule 1 (Kim1)
SEA579Hu	ELISA Kit for Aquaporin 1, Colton Blood Group (AQP1)	CEV769Ge	ELISA Kit for Liraglutide (LRT)
CEX053Ge	ELISA Kit for Spermidine (SMD)	SEA222Ca	ELISA Kit for Interferon Beta (IFN β)
SEA053Hu	ELISA Kit for Insulin Like Growth Factor Binding Protein 2 (IGFBP2)	SEB650Hu	ELISA Kit for Major Basic Protein (MBP)
CEA802Hu	ELISA Kit for Cholecystokinin (CCK)	SEC186Hu	ELISA Kit for Hepatocyte Growth Factor Receptor (HGFR)
CEA393Hu	ELISA Kit for Substance P (SP)	CEA441Bo	ELISA Kit for Luteinizing Hormone (LH)
CED718Ge	ELISA Kit for Kynurenic Acid (KYNA)	HEA080Hu	High Sensitive ELISA Kit for Interleukin 8 (IL8)
MEA079Mu	Mini Samples ELISA Kit for Interleukin 6 (IL6)	CEA830Bo	ELISA Kit for Follicle Stimulating Hormone (FSH)
CEA804Hu	ELISA Kit for Glucagon Like Peptide 1 (GLP1)	CEX656Ge	ELISA Kit for Hexa Histidine (H6)
CEO440Ge	ELISA Kit for Anandamide (AEA)	SEB530Hu	ELISA Kit for Platelet Membrane Glycoprotein IV (GP4)
HEB526Ge	High Sensitive ELISA Kit for Lipopolysaccharide (LPS)	SEE038Mu	ELISA Kit for Neurofilament, Light Polypeptide (NEFL)
SEB083Hu	ELISA Kit for Superoxide Dismutase 2, Mitochondrial (SOD2)	SEA394Hu	ELISA Kit for Tissue Factor Pathway Inhibitor (TFPI)
CEA248Ge	ELISA Kit for Bovine Serum Albumin (BSA)	SEB472Bo	ELISA Kit for Alkaline Phosphatase (ALP)
CEO623Ge	ELISA Kit for Docosahexaenoic Acid (DHA)	SEA250Po	ELISA Kit for Trypsin (TRY)
MEA563Mu	Mini Samples ELISA Kit for Interleukin 1 Beta (IL1 β)	CEA048Hu	ELISA Kit for Inhibin Beta E (INH β E)
SEA476Hu	ELISA Kit for Cystatin A (CSTA)	SEK541Mu	ELISA Kit for Regenerating Islet Derived Protein 3 Beta (REG3 β)
CED720Ge	ELISA Kit for Tryptophan (Trp)	AEA049Hu	ELISA Kit for Anti-Interferon Gamma Antibody (Anti-IFN γ)
HEA079Ra	High Sensitive ELISA Kit for Interleukin 6 (IL6)	AEA937Hu	ELISA Kit for Anti-Nephrin Antibody (Anti-NPHN)
HEA133Hu	High Sensitive ELISA Kit for Tumor Necrosis Factor Alpha (TNF α)	SEB951Hu	Human Tar DNA Binding Protein 43kDa (TDP43) ELISA Kit
SEA817Po	ELISA Kit for Haptoglobin (Hpt)	SEA387Ca	ELISA Kit for Complement Component 3a (C3a)
SEA573Mu	ELISA Kit for Procollagen III N-Terminal Propeptide (PIIINP)	SEC188Hu	ELISA Kit for V-Erb A Erythroblastic Leukemia Viral Oncogene Homolog 4 (ErbB4)
HEA079Hu	High Sensitive ELISA Kit for Interleukin 6 (IL6)	AEA843Po	ELISA Kit for Anti-Gonadotropin Releasing Hormone Antibody (Anti-GnRH)
CEB459Ge	ELISA Kit for Ovalbumin (OVA)	SEA387Rb	ELISA Kit for Complement Component 3a (C3a)
SEA109Hu	ELISA Kit for Creatine Kinase, Muscle (CKM)	SEC395Hu	ELISA Kit for Carboxypeptidase A3, Mast Cell (CPA3)
HEA133Ra	High Sensitive ELISA Kit for Tumor Necrosis Factor Alpha (TNF α)	SCA006Hu	CLIA Kit for Amphiregulin (AREG)
SEB928Hu	ELISA Kit for Monokine Induced By Interferon Gamma (MIG)	SED410Hu	ELISA Kit for Dickkopf Related Protein 3 (DKK3)
HEE038Hu	High Sensitive ELISA Kit for Neurofilament, Light Polypeptide (NEFL)	SEA387Po	ELISA Kit for Complement Component 3a (C3a)
CEA161Ge	ELISA Kit for Heparan Sulfate (HS)	CEA070Ge	ELISA Kit for Androsterone (ADT)
CEA001Hu	ELISA Kit for Activin A (ACVA)	SED452Hu	ELISA Kit for Myosin Light Chain 9, Regulatory (MYL9)
SEA395Hu	ELISA Kit for Inhibin A (INHA)	CEX304Ge	ELISA Kit for Teduglutide
SEB070Ra	ELISA Kit for Tryptase (TPS)	HEA079Mu	High Sensitive ELISA Kit for Interleukin 6 (IL6)
SEE640Hu	ELISA Kit for Receptor Interacting Serine Threonine Kinase 1 (RIPK1)	SEA280Hu	ELISA Kit for Calnexin (CNX)
SEJ138Hu	ELISA Kit for Eosinophil Peroxidase (EPX)	SEF192Hu	ELISA Kit for Fucosyltransferase 2 (FUT2)
CEA048Mu	ELISA Kit for Inhibin Beta E (INH β E)	CEK777Ge	ELISA Kit for Tetracycline (TTC)
SEA048Hu	ELISA Kit for Inhibin Beta E (INH β E)	HEA133Mu	High Sensitive ELISA Kit for Tumor Necrosis Factor Alpha (TNF α)
SEC179Ge	ELISA Kit for Concanavalin A (ConA)	SEA371Ca	ELISA Kit for Interferon Gamma Induced Protein 10kDa (IP10)

Cloud-Clone Corp.

Original Manufacturer for Reagents, Samples and Services
 23603 W. Fernhurst Dr., Unit 2201, Katy, TX 77494, USA
 Tel: 001-832-538-0970 Toll free: 888-960-7402 (In the USA)

www.cloud-clone.com www.cloud-clone.us



Cloud-Clone Corp.

Cloud-Clone Antibodies

Product Types

- ✓ Polyclonal Antibody
- ✓ Monoclonal Antibody
- ✓ Recombinant Antibody

Product Advantages

Backed by decades of expertise in antibody development and manufacturing, Cloud-Clone has built a comprehensive, end-to-end antibody preparation platform spanning polyclonal, monoclonal, and recombinant antibodies. Our platform supports multiple species and a vast range of target types, with fully controllable core technologies and rigorous quality control standards. We deliver stable, efficient, and customizable one-stop solutions for life science research, IVD raw material development, and beyond.



100% Original Manufacturing

Fully independent development from antigen design to antibody validation, ensuring stable supply and consistent quality



Unmatched Catalog Size

Over 27,000 highly specific antibodies covering human, mouse, rat, rabbit, porcine, bovine, caprine, etc.



Validated for Multiple Applications

Validated for WB, ELISA, IHC, IF, FCM, IP, with KO gold-standard validation for maximum specificity



Stringent Quality Control

ISO 9001 & ISO 13485 certified; three-level QC (raw material, intermediate, final) guarantees lot-to-lot consistency



Innovative Production Technologies

Proprietary polymer adjuvants, nano-emulsification, and recombinant antibody technology minimize batch variation



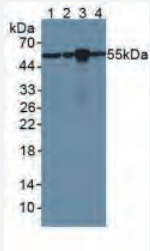
Globally Cited & Trusted

Over 42,000 SCI citations, including more than 350 publications in *Nature*, *Science* and *Cell*

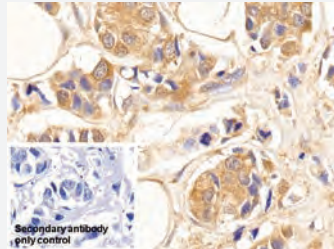
Cloud-Clone Antibodies: Validated for Multi-Application

TUBb *Catalog No.: CAB870Hu22*

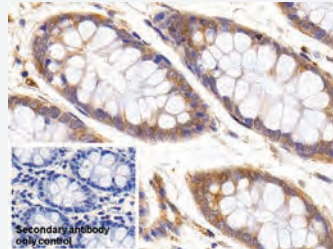
Anti-Tubulin Beta (TUBb) Monoclonal Antibody



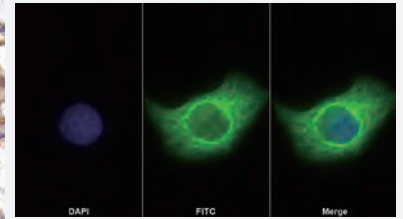
Western Blot; Sample: Lane1: Human HeLa Cells; Lane2: Human A431 Cells; Lane3: Rat Brain Tissue; Lane4: Rat Kidney Tissue
 Primary Ab: 1µg/ml Mouse Anti-Human TUBb Antibody (Catalog: CAB870Hu22)
 Second Ab: 0.2µg/ml HRP-Linked Rabbit Anti-Mouse IgG Polyclonal Antibody (Catalog: SAA544Mu19)



DAB staining on IHC-P;
 Sample: Human Breast cancer Tissue
 Primary Ab: 10µg/ml Mouse Anti-Human TUBb Antibody (Catalog: CAB870Hu22)
 Control: Used PBS instead of primary antibody
 Second Ab: 2µg/ml HRP-Linked Caprine Anti-Mouse IgG Polyclonal Antibody (Catalog: SAA544Mu19)



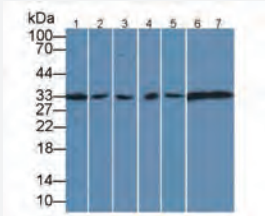
DAB staining on IHC-P;
 Sample: Human Colon Tissue
 Primary Ab: 10µg/ml Mouse Anti-Human TUBb Antibody (Catalog: CAB870Hu22)
 Control: Used PBS instead of primary antibody
 Second Ab: 2µg/ml HRP-Linked Caprine Anti-Mouse IgG Polyclonal Antibody (Catalog: SAA544Mu19)



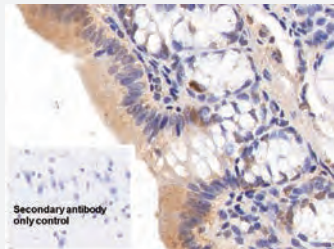
FITC staining on IF; Sample: HeLa cell
 Primary Ab: 20µg/ml Mouse Anti-Human TUBb Antibody (Catalog: CAB870Hu22)
 Second Ab: 2µg/ml FITC-Linked Caprine Anti-Mouse IgG Polyclonal Antibody (Catalog: SAA544Mu11)

PCNA *Catalog No.: CAA591Hu22*

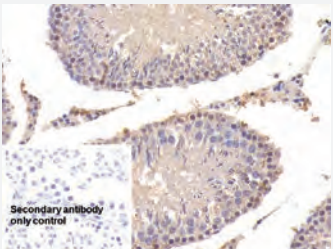
Anti-Proliferating Cell Nuclear Antigen (PCNA) Monoclonal Antibody



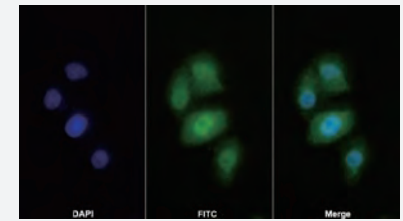
Western Blot; Sample: Lane1: Rat Lung lysate; Lane2: Porcine Kidney lysate; Lane3: Canine Lung lysate; Lane4: Bovine Testis lysate; Lane5: Caprine Lung lysate; Lane6: Cavia Lung lysate; Lane7: Equine Liver lysate
 Primary Ab: 1µg/ml Mouse Anti-Human PCNA Antibody (Catalog: CAA591Hu22)
 Second Ab: 0.2µg/ml HRP-Linked Rabbit Anti-Mouse IgG Polyclonal Antibody (Catalog: SAA544Mu19)



DAB staining on IHC-P;
 Sample: Rat Cerebrum Tissue
 Primary Ab: 30µg/ml Mouse Anti-Human PCNA Antibody (Catalog: CAA591Hu22)
 Control: Used PBS instead of primary antibody
 Second Ab: 2µg/ml HRP-Linked Caprine Anti-Mouse IgG Polyclonal Antibody (Catalog: SAA544Mu19)



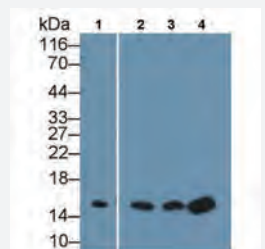
DAB staining on IHC-P;
 Sample: Rat Testis Tissue
 Primary Ab: 30µg/ml Mouse Anti-Human PCNA Antibody (Catalog: CAA591Hu22)
 Control: Used PBS instead of primary antibody
 Second Ab: 2µg/ml HRP-Linked Caprine Anti-Mouse IgG Polyclonal Antibody (Catalog: SAA544Mu19)



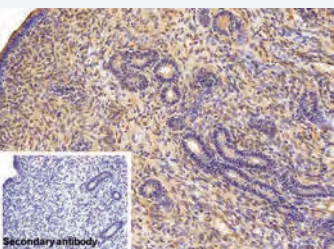
FITC staining on IF; Samples: Human MCF7 cell;
 Primary Ab: 20µg/ml Mouse Anti-Human PCNA Antibody (Catalog: MAB231Hu22)
 Second Ab: 0.75µg/ml FITC-Linked Caprine Anti-Mouse IgG Polyclonal Antibody (Catalog: SAA544Mu18)

GAL1 *Catalog No.: PAA321Hu01*

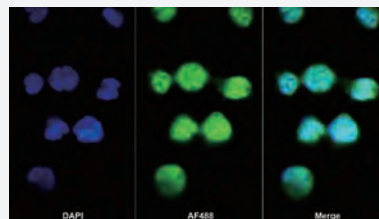
Polyclonal Antibody to Galectin 1 (GAL1)



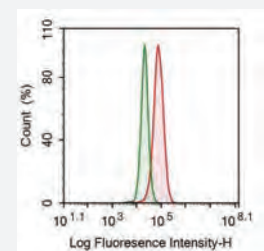
Western Blot; Sample: Lane1: K562 cell lysate; Lane2: Mouse Heart lysate; Lane3: Mouse Liver lysate; Lane4: Mouse Kidney lysate
 Primary Ab: 1µg/ml Rabbit Anti-Human GAL1 Antibody (Catalog: PAA321Hu01)
 Second Ab: 0.2µg/ml HRP-Linked Caprine Anti-Rabbit IgG Polyclonal Antibody (Catalog: SAA544Rb19)



DAB staining on IHC-P;
 Sample: Porcine Uterus Tissue
 Primary Ab: 10µg/ml Rabbit Anti-Human GAL1 Antibody (Catalog: PAA321Hu01)
 Control: Used PBS instead of primary antibody
 Second Ab: 2µg/ml HRP-Linked Caprine Anti-Rabbit IgG Polyclonal Antibody (Catalog: SAA544Rb19)



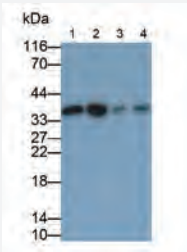
AF488 staining on IF; Sample: K562 cell
 Primary Ab: 20µg/ml Rabbit Anti-Human GAL1 Antibody (Catalog: PAA321Hu01)
 Second Ab: 2µg/ml AF488-Linked Caprine Anti-Rabbit IgG Polyclonal Antibody (Catalog: SAA544Rb11)



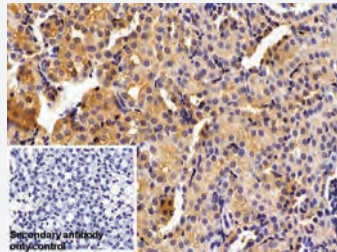
Human MDA-MB-231 cell was fixed with 2% paraformaldehyde (10 min), permeabilised with 0.1% BSA-Triton X-100, then stained with 20µg/ml rabbit Anti-human GAL1 Polyclonal Antibody (Catalog: PAA321Hu01, red histogram) or Isotype control antibody (Catalog: IS067-Rb01, green histogram), followed by 1µg/ml FITC-conjugated Anti-rabbit IgG Secondary Antibody (Catalog: SAA544Rb18)

OTUB1 *Catalog No.: PAL838Hu01*

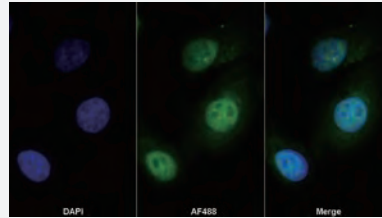
Polyclonal Antibody to Otubain 1 (OTUB1)



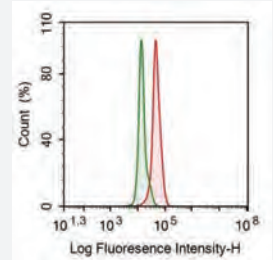
Western Blot; Samples: Lane 1: Mouse Testis lysate; Lane 2: Rat Testis lysate; Lane 3: Porcine Cerebrum lysate; Lane 4: Hela cell lysate; Primary Ab: 0.1 µg/ml Rabbit Anti Human OTUB1 Antibody (Catalog: PAL838Hu01) Second Ab: 0.2 µg/ml HRP-Linked Caprine Anti-Rabbit IgG Polyclonal Antibody (Catalog: SAA544Rb19)



DAB staining on IHC-P; Sample: Mouse Kidney Tissue Primary Ab: 10 µg/ml Rabbit Anti Human OTUB1 Antibody (Catalog: PAL838Hu01) Control: Used PBS instead of primary antibody Second Ab: 2 µg/ml HRP-Linked Caprine Anti-Rabbit IgG Polyclonal Antibody (Catalog: SAA544Rb19)



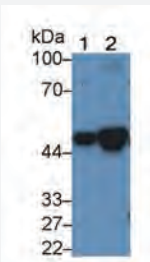
AF488 staining on IF; Sample: HeLa cell Primary Ab: 20 µg/ml Rabbit Anti Human OTUB1 Antibody (Catalog: PAL838Hu01) Second Ab: 2 µg/ml AF488-Linked Caprine Anti-Rabbit IgG Polyclonal Antibody (Catalog: SAA544Rb11)



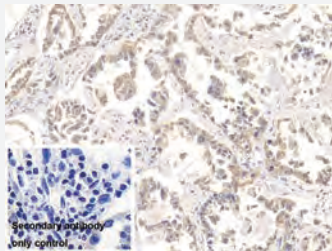
Human MCF7 cell was fixed with 2% paraformaldehyde (10 min), permeabilised with 0.1% BSA-TritonX-100, then stained with 20 µg/ml rabbit Anti-human OTUB1 Polyclonal Antibody (Catalog: PAL838Hu01, red histogram) or isotype control antibody (Catalog: IS067-Rb01, green histogram), followed by 1 µg/ml FITC conjugated Anti-rabbit IgG Secondary Antibody (Catalog: SAA544Rb18)

CK18 *Catalog No.: MAB231Hu22*

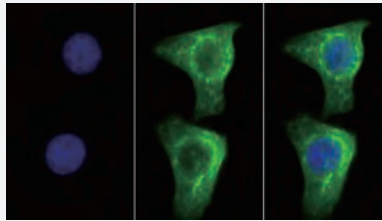
Monoclonal Antibody to Cytokeratin 18 (CK18)



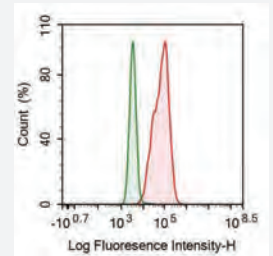
Western Blot; Sample: Lane 1: K562 Cell lysate; Lane 2: Hela cell lysate Primary Ab: 2 µg/ml Mouse Anti-Human KRT18 Antibody (Catalog: MAB231Hu22) Second Ab: 0.2 µg/ml HRP-Linked Caprine Anti-Mouse IgG Polyclonal Antibody (Catalog: SAA544Mu19)



DAB staining on IHC-P; Sample: Human Lung cancer Tissue; Primary Ab: 10 µg/ml Mouse Anti Human KRT18 Antibody (Catalog: MAB231Hu22) Second Ab: 2 µg/ml HRP-Linked Caprine Anti-Mouse IgG Polyclonal Antibody (Catalog: SAA544Mu19)



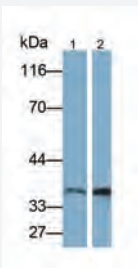
FITC staining on IF; Sample: Human HeLa cell; Primary Ab: 30 µg/ml Mouse Anti Human CK18 Antibody (Catalog: MAB231Hu22) Second Ab: 2 µg/ml FITC-Linked Caprine Anti-Mouse IgG Polyclonal Antibody (Catalog: SAA544Mu18)



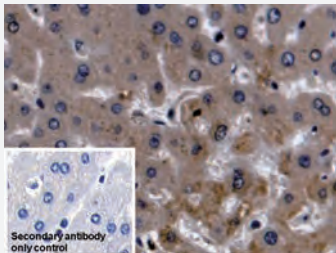
Human MCF7 cell line was fixed with 2% paraformaldehyde (10 min), permeabilised with 0.1% BSA-TritonX-100, then stained with 10 µg/ml mouse Anti-human CK18 Monoclonal Antibody (Catalog: MAB231Hu22, red histogram) or isotype control antibody (Catalog: S067-Mu01, green histogram), followed by 1 µg/ml FITC-conjugated Anti-mouse IgG Secondary Antibody (Catalog: SAA544Mu18)

IGFBP2 *Catalog No.: PAA053Hu01*

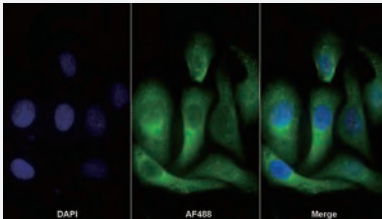
Polyclonal Antibody to Insulin Like Growth Factor Binding Protein 2 (IGFBP2)



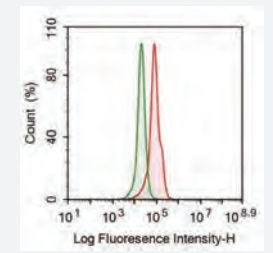
Western Blot; Samples: Lane 1: Human Urine; Lane 2: SH-SY5Y cell lysate; Primary Ab: 0.1 µg/ml Rabbit Anti-Human IGFBP2 Antibody (Catalog: PAA053Hu01) Second Ab: 0.2 µg/ml HRP-Linked Caprine Anti-Rabbit IgG Polyclonal Antibody (Catalog: SAA544Rb19)



DAB staining on IHC-P; Sample: Human Liver Tissue Primary Ab: 20 µg/ml Rabbit Anti-Human IGFBP2 Antibody (Catalog: PAA053Hu01) Control: Used PBS instead of primary antibody Second Ab: 2 µg/ml HRP-Linked Caprine Anti-Rabbit IgG Polyclonal Antibody (Catalog: SAA544Rb19)



AF488 staining on IF; Sample: HeLa cell Primary Ab: 20 µg/ml Rabbit Anti-Human IGFBP2 Antibody (Catalog: PAA053Hu01) Second Ab: 2 µg/ml AF488-Linked Caprine Anti-Rabbit IgG Polyclonal Antibody (Catalog: SAA544Rb11)



Human NB-4 cell line was fixed with 2% paraformaldehyde (10 min), permeabilised with 0.1% BSA-Triton X-100, then stained with 20 µg/ml rabbit Anti-human IGFBP2 Polyclonal Antibody (Catalog: PAA053Hu01, red histogram) or isotype control antibody (Catalog: IS067-Rb01, green histogram), followed by 1 µg/ml FITC-conjugated Anti-rabbit IgG Secondary Antibody (Catalog: SAA544Rb18)

Multi-Application Antibody List (Part)

Catalog No.	Product Name	Host	Applications
PAL838Hu01	Polyclonal Antibody to Otubain 1 (OTUB1)	Rabbit	WB / IHC / IF/ FCM
PAL969Hu01	Polyclonal Antibody to NADH Dehydrogenase, Quinone 1 (NQO1)	Rabbit	WB / IHC / IF/ FCM
PAA053Hu01	Polyclonal Antibody to Insulin Like Growth Factor Binding Protein 2 (IGFBP2)	Rabbit	WB / IHC / IF/ FCM
PAA066Hu01	Polyclonal Antibody to Interleukin 1 Receptor Type I (IL1R1)	Rabbit	WB / IHC / IF/ FCM
PAA122Hu01	Polyclonal Antibody to Stromal Cell Derived Factor 1 (SDF1)	Rabbit	WB / IHC / IF/ FCM
PAA214Hu01	Polyclonal Antibody to Caveolin 1 (CAV1)	Rabbit	WB / IHC / IF/ FCM
PAA252Hu01	Polyclonal Antibody to Apolipoprotein C1 (APOC1)	Rabbit	WB / IHC / IF/ FCM
PAA321Hu01	Polyclonal Antibody to Galectin 1 (GAL1)	Rabbit	WB / IHC / IF/ FCM
MAA532Hu22	Monoclonal Antibody to Plasminogen Activator Inhibitor 1 (PAI1)	Mouse	WB / IHC / IF/ FCM
PAA556Hu01	Polyclonal Antibody to Cytokeratin 7 (CK7)	Rabbit	WB / IHC / IF/ FCM
PAA588Hu01	Polyclonal Antibody to Pyruvate kinase isozymes M2 (PKM2)	Rabbit	WB / IHC / IF/ FCM
PAA588Ra01	Polyclonal Antibody to Pyruvate kinase isozymes M2 (PKM2)	Rabbit	WB / IHC / IF/ FCM
PAA624Hu01	Polyclonal Antibody to Hepatoma Derived Growth Factor (HDGF)	Rabbit	WB / IHC / IF/ FCM
PAA651Hu01	Polyclonal Antibody to Complement component 1 Q subcomponent-binding protein, mitochondrial (C1QBP)	Rabbit	WB / IHC / IF/ FCM
PAA764Hu01	Polyclonal Antibody to Forkhead Box Protein O1 (FOXO1)	Rabbit	WB / IHC / IF/ FCM
PAA776Hu01	Polyclonal Antibody to Pyruvate dehydrogenase alpha 1 (PDHA1)	Rabbit	WB / IHC / IF/ FCM
PAA794Hu01	Polyclonal Antibody to Cyclin Dependent Kinase Inhibitor 2A (CDKN2A)	Rabbit	WB / IHC / IF/ FCM
PAA979Hu01	Polyclonal Antibody to Cyclophilin A (CYPA)	Rabbit	WB / IHC / IF/ FCM
PAB081Hu01	Polyclonal Antibody to Heat Shock 70kDa Protein 1A (HSPA1A)	Rabbit	WB / IHC / IF/ FCM
PAB090Hu01	Polyclonal Antibody to Glutathione S Transferase Pi (GSTp)	Rabbit	WB / IHC / IF/ FCM
PAB215Hu01	Polyclonal Antibody to Fibrinogen Beta Chain (FGB)	Rabbit	WB / IHC / IF/ FCM
MAB231Hu22	Monoclonal Antibody to Cytokeratin 18 (CK18)	Mouse	WB / IHC / IF/ FCM
PAB243Hu01	Polyclonal Antibody to Heart-type Fatty Acid Binding Protein (H-FABP)	Rabbit	WB / IHC / IF/ FCM
PAB486Hu01	Polyclonal Antibody to Calreticulin (CALR)	Rabbit	WB / IHC / IF/ FCM
PAB745Hu01	Polyclonal Antibody to Phosphofructokinase, Platelet (PFKP)	Rabbit	WB / IHC / IF/ FCM
PAB822Hu01	Polyclonal Antibody to Cytokeratin 17 (CK17)	Rabbit	WB / IHC / IF/ FCM
PAC025Hu01	Polyclonal Antibody to Cytokeratin 8 (CK8)	Rabbit	WB / IHC / IF/ FCM
MAC206Hu22	Monoclonal Antibody to Histone Deacetylase 1 (HDAC1)	Mouse	WB / IHC / IF/ FCM
PAC418Hu01	Polyclonal Antibody to Catalase (CAT)	Rabbit	WB / IHC / IF/ FCM
PAC996Hu01	Polyclonal Antibody to Glycyl tRNA Synthetase (GARS)	Rabbit	WB / IHC / IF/ FCM
PAD198Hu01	Polyclonal Antibody to Sequestosome 1 (SQSTM1)	Rabbit	WB / IHC / IF/ FCM
PAE748Hu01	Polyclonal Antibody to Karyopherin Alpha 2 (KPN2)	Rabbit	WB / IHC / IF/ FCM
PAF468Hu01	Polyclonal Antibody to Growth Factor Receptor Bound Protein 10 (Grb10)	Rabbit	WB / IHC / IF/ FCM
PAF755Hu01	Polyclonal Antibody to Peroxiredoxin 5 (PRDX5)	Rabbit	WB / IHC / IF/ FCM
PAF897Hu01	Polyclonal Antibody to Calmodulin Like Protein 5 (CALML5)	Rabbit	WB / IHC / IF/ FCM
PAJ322Hu01	Polyclonal Antibody to Cystatin B (CSTB)	Rabbit	WB / IHC / IF/ FCM
PAJ683Hu01	Polyclonal Antibody to Aconitase 1 (ACO1)	Rabbit	WB / IHC / IF/ FCM
PAJ829Hu01	Polyclonal Antibody to Phosphoinositide-3-Kinase Catalytic Beta Polypeptide (PIK3Cb)	Rabbit	WB / IHC / IF/ FCM
PAE582Hu01	Polyclonal Antibody to B-Cell CLL/Lymphoma 2 Like Protein (Bcl2L)	Rabbit	WB / IHC / IF/ FCM
PAJ829Hu02	Polyclonal Antibody to Phosphoinositide-3-Kinase Catalytic Beta Polypeptide (PIK3Cb)	Rabbit	WB / IHC / IF/ FCM
PAB932Hu02	Polyclonal Antibody to Glyceraldehyde-3-Phosphate Dehydrogenase (GAPDH)	Rabbit	WB / IHC / IF/ FCM

Catalog No.	Product Name	Host	Applications
PAA037Mu01	Polyclonal Antibody to Fibronectin (FN)	Rabbit	WB / IHC / IF
PAA705Ra01	Polyclonal Antibody to Mucin 2 (MUC2)	Rabbit	WB / IHC / IF
PAB697Hu01	Polyclonal Antibody to Alpha-1-Antitrypsin (a1AT)	Rabbit	WB / IHC / IF
PAA833Ra01	Polyclonal Antibody to Von Willebrand Factor (vWF)	Rabbit	WB / IHC / IF
PAA305Hu01	Polyclonal Antibody to Thyroxine Binding Globulin (TBG)	Rabbit	WB / IHC / IF
PAC036Ra01	Polyclonal Antibody to Transferrin (TF)	Rabbit	WB / IHC / IF
PAB083Ra01	Polyclonal Antibody to Superoxide Dismutase 2, Mitochondrial (SOD2)	Rabbit	WB / IHC / IF
PAA260Mu01	Polyclonal Antibody to Beta-2-Microglobulin (b2M)	Rabbit	WB / IHC / IF
PAA260Ra01	Polyclonal Antibody to Beta-2-Microglobulin (b2M)	Rabbit	WB / IHC / IF
PAA820Mu01	Polyclonal Antibody to Coagulation Factor II (F2)	Rabbit	WB / IHC / IF
PAA377Hu01	Polyclonal Antibody to Retinol Binding Protein 2, Cellular (RBP2)	Rabbit	WB / IHC / IF
PAA217Ra01	Polyclonal Antibody to Alpha-1-Microglobulin (a1M)	Rabbit	WB / IHC / IF
PAB932Mu01	Polyclonal Antibody to Glyceraldehyde-3-Phosphate Dehydrogenase (GAPDH)	Rabbit	WB / IHC / IF
PAA928Ra01	Polyclonal Antibody to Tumor Protein p53 (P53)	Rabbit	WB / IHC / IF
PAA143Ra01	Polyclonal Antibody to Vascular Endothelial Growth Factor A (VEGFA)	Rabbit	WB / IHC / IF
PAA178Hu01	Polyclonal Antibody to Alpha-2-Heremans Schmid Glycoprotein (AHSG)	Rabbit	WB / IHC / IF
PAA896Hu01	Polyclonal Antibody to Cystatin C (Cys-C)	Rabbit	WB / IHC / IF
PAB409Hu01	Polyclonal Antibody to Hemoglobin (HB)	Rabbit	WB / IHC / IF
MAA896Hu21	Monoclonal Antibody to Cystatin C (Cys-C)	Mouse	WB / IHC / IF
PAA821Po01	Polyclonal Antibody to C Reactive Protein (CRP)	Rabbit	WB / IHC / IF
MAA532Hu22	Monoclonal Antibody to Plasminogen Activator Inhibitor 1 (PAI1)	Mouse	WB / IHC / FCM
PAA537Ra01	Polyclonal Antibody to Enolase, Neuron Specific (NSE)	Rabbit	WB / IHC / FCM
PAA556Hu01	Polyclonal Antibody to Cytokeratin 7 (CK7)	Rabbit	WB / IHC / FCM
PAA588Hu01	Polyclonal Antibody to Pyruvate kinase isozymes M2 (PKM2)	Rabbit	WB / IHC / FCM
PAA588Ra01	Polyclonal Antibody to Pyruvate kinase isozymes M2 (PKM2)	Rabbit	WB / IHC / FCM
PAA602Hu01	Polyclonal Antibody to Peroxisomal Biogenesis Factor 2 (PEX2)	Rabbit	WB / IHC / FCM
PAA624Hu01	Polyclonal Antibody to Hepatoma Derived Growth Factor (HDGF)	Rabbit	WB / IHC / FCM
PAA651Hu01	Polyclonal Antibody to Complement component 1 Q subcomponent-binding protein, mitochondrial (C1QBP)	Rabbit	WB / IHC / FCM
MAA651Hu22	Monoclonal Antibody to Complement component 1 Q subcomponent-binding protein, mitochondrial (C1QBP)	Mouse	WB / IHC / FCM
PAA656Hu01	Polyclonal Antibody to Amiloride Binding Protein 1 (ABP1)	Rabbit	WB / IHC / FCM
PAA716Hu01	Polyclonal Antibody to Glucose-6-phosphate Dehydrogenase (G6PD)	Rabbit	WB / IHC / FCM
PAA717Hu01	Polyclonal Antibody to Hypoxanthine Phosphoribosyltransferase 1 (HPRT1)	Rabbit	WB / IHC / FCM
PAA721Hu01	Polyclonal Antibody to C-Type Natriuretic Peptide (CNP)	Rabbit	WB / IHC / FCM
PAA750Hu01	Polyclonal Antibody to Complement Receptor 2 (CD21)	Rabbit	WB / IHC / FCM
PAA764Hu01	Polyclonal Antibody to Forkhead Box Protein O1 (FOXO1)	Rabbit	WB / IHC / FCM
PAA776Hu01	Polyclonal Antibody to Pyruvate dehydrogenase alpha 1 (PDHA1)	Rabbit	WB / IHC / FCM
PAA781Hu01	Polyclonal Antibody to Cluster Of Differentiation 276 (CD276)	Rabbit	WB / IHC / FCM
PAA794Hu01	Polyclonal Antibody to Cyclin Dependent Kinase Inhibitor 2A (CDKN2A)	Rabbit	WB / IHC / FCM
PAA861Hu01	Polyclonal Antibody to Complement Component 3 (C3)	Rabbit	WB / IHC / FCM
PAA979Hu01	Polyclonal Antibody to Cyclophilin A (CYPA)	Rabbit	WB / IHC / FCM
MAA500Hu21	Monoclonal Antibody to Nestin (NES)	Mouse	WB / IHC / FCM
MAB231Hu21	Monoclonal Antibody to Cytokeratin 18 (CK18)	Mouse	WB / IHC / FCM
PAB341Hu01	Polyclonal Antibody to Actin Alpha 1, Cardiac Muscle (ACTC1)	Rabbit	WB / IHC / FCM

Citations of Cloud-Clone Antibodies

Catalog No.	Product Name	Journal	IF	PMID/DOI
PAB030Mu01	Polyclonal Antibody to Protein Tyrosine Phosphatase Receptor Type C (CD45)	<i>Cell</i>	60.7	29958103
PAB516Hu01	Polyclonal Antibody to Prominin 1 (PROM1)	<i>Journal of Clinical Oncology</i>	45.3	10.1200/JCO.2019.37.15_suppl.e15531
PAG414Ge01	Polyclonal Antibody to S-Adenosyl Methionine (SAM)	<i>Nature Cell Biology</i>	35.3	37652981
PAC625Hu01	Polyclonal Antibody to 3-Mercaptopyruvate Sulfurtransferase (MST)	<i>Cell Metabolism</i>	32.4	38113886
PAA308Mu02	Polyclonal Antibody to Galectin 8 (GAL8)	<i>Cell Metabolism</i>	32.4	31447322
CAB340Hu22	Anti-Beta Actin (ACTB) Monoclonal Antibody	<i>Cell Metabolism</i>	32.4	30799288
PAB975Mu01	Polyclonal Antibody to Tenascin C (TNC)	<i>Advanced Materials</i>	32	38572797
PAA471Mu01	Polyclonal Antibody to Osteocalcin (OC)	<i>Advanced Materials</i>	32	38572797
PAA143Po01	Polyclonal Antibody to Vascular Endothelial Growth Factor A (VEGFA)	<i>Advanced Materials</i>	32	39148150
CAB340Mi01	Anti-Beta Actin (ACTB) Polyclonal Antibody	<i>Molecular Cancer</i>	27.4	37161388
CAB932Mi01	Anti-Glyceraldehyde-3-Phosphate Dehydrogenase (GAPDH) Polyclonal Antibody	<i>Molecular Cancer</i>	27.4	37161388
PAB928Hu01	Polyclonal Antibody to Monokine Induced By Interferon Gamma (MIG)	<i>Molecular Cancer</i>	27.4	39580469
PAA049Hu01	Polyclonal Antibody to Interferon Gamma (IFNg)	<i>Molecular Cancer</i>	27.4	39580469
PAX051Ge01	Polyclonal Antibody to Putrescine (PT)	<i>Neuron</i>	27	32905785
PAG476Hu01	Polyclonal Antibody to Histidine Decarboxylase (HDC)	<i>Cell Stem Cell</i>	25.2	36265493
PAA705Mu01	Polyclonal Antibody to Mucin 2 (MUC2)	<i>Cell Stem Cell</i>	25.2	31564549
PAA684Mu01	Polyclonal Antibody to Mucin 5 Subtype B (MUC5B)	<i>Cell Stem Cell</i>	25.2	39181129
PAB755Mu01	Polyclonal Antibody to Interferon Regulatory Factor 4 (IRF4)	<i>Blood</i>	20.3	30002144
PAA611Mu01	Polyclonal Antibody to Thrombospondin 1 (THBS1)	<i>Matter</i>	19.9	10.1016/j.matt.2023.04.026
PAB317Mu01	Polyclonal Antibody to Perforin 1 (PRF1)	<i>Matter</i>	19.9	10.1016/j.matt.2023.04.026
PAA600Mu01	Polyclonal Antibody to Granzyme B (GZMB)	<i>Matter</i>	19.9	10.1016/j.matt.2023.04.026
PAA102Hu01	Polyclonal Antibody to Matrix Metalloproteinase 7 (MMP7)	<i>Science Translational Medicine</i>	19.3	29167395
PAA591Mi01	Polyclonal Antibody to Proliferating Cell Nuclear Antigen (PCNA)	<i>ACS Nano</i>	18	36343209
PAB028Hu07	Polyclonal Antibody to Albumin (ALB)	<i>ACS Nano</i>	18	39365667
PAL535Hu01	Polyclonal Antibody to Growth Arrest And DNA Damage Inducible Protein Beta (GADD45b)	<i>Nature Communications</i>	17.7	36463234
PAA711Mu04	Polyclonal Antibody to Heparanase (HPSE)	<i>Nature Communications</i>	17.7	38378682
PAA603Mu01	Polyclonal Antibody to Apolipoprotein B100 (APOB100)	<i>Nature Communications</i>	17.7	34853313
LAA785Mu81	FITC-Linked Polyclonal Antibody to Kidney Injury Molecule 1 (Kim1)	<i>Nature Communications</i>	17.7	36973294
PAA677Mu01	Polyclonal Antibody to Coagulation Factor XII (F12)	<i>Nature Communications</i>	17.7	38605050
PAO623Ge01	Polyclonal Antibody to Docosahexaenoic Acid (DHA)	<i>Nature Communications</i>	17.7	38594269
PAB728Hu01	Polyclonal Antibody to Bone Morphogenetic Protein 9 (BMP9)	<i>Nature Communications</i>	17.7	38589397
SAA544Rb50	None-Linked Guinea pig Anti-Rabbit IgG Polyclonal Antibody	<i>Nature Communications</i>	17.7	35668082
PAF548Hu01	Polyclonal Antibody to Lamin B1 (LMNB1)	<i>Nature Communications</i>	17.7	38898005
PAB870Hu01	Polyclonal Antibody to Tubulin Beta (TUBb)	<i>Nature Communications</i>	17.7	38898005
PAA182Ge01	Polyclonal Antibody to Hyaluronic Acid (HA)	<i>Nature Communications</i>	17.7	38971796

Cloud-Clone Corp.

Original Manufacturer for Reagents, Samples and Services
 23603 W. Fernhurst Dr., Unit 2201, Katy, TX 77494, USA
 Tel: 001-832-538-0970 Toll free: 888-960-7402 (In the USA)

www.cloud-clone.com www.cloud-clone.us



Cloud-Clone Corp.

Cloud-Clone Proteins

For Researchers & Industrial Clients



Product Advantages

Product Introduction

Cloud-Clone provides a comprehensive portfolio of high-quality proteins, dedicated to accelerating breakthroughs in biomedical research. Our products are engineered and manufactured using our proprietary expression platforms, ensuring exceptional purity, consistent bioactivity, and batch-to-batch uniformity.



- More than 17,000 recombinant proteins
- More than 2,900 full-length proteins
- More than 1,300 active proteins
- Covering 10+ species: human, mouse, rat, cavia, rabbit, canine, porcine, bovine, caprine, etc.
- Support multi-species, multi-scenario research & manufacturing.

Authentic Origin & Manufacturing



All proteins are independently produced based on our original gene library, ensuring guaranteed authenticity and sequence accuracy.

Stringent Quality Control



Rigorous QC processes validate purity (>95% by SDS-PAGE/HPLC), low endotoxin levels (<0.01 EU/ μ g), and functional activity.

GMP-grade production



GMP-grade clean production with strict controls minimizes environmental interference. Standardized processes reduce batch variation and ensure stable product quality.

Customization Services & Technical Support

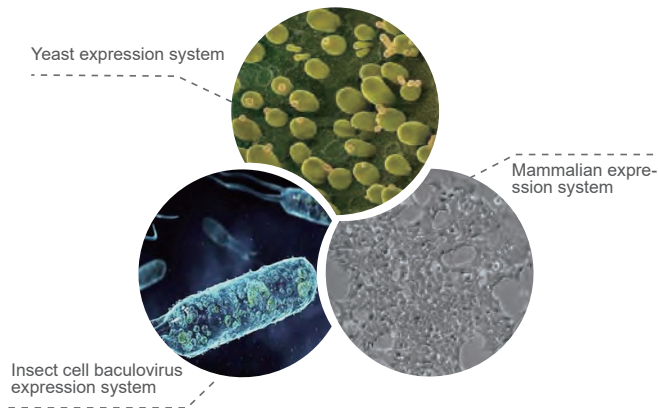


We offer fully customized production (expression system, tag, activity, etc.) to meet specific customer needs. Our professional technical team provides rapid responses and efficient solutions for experimental issues.

Expression Platform & Industrial Production

Cloud-Clone offers a complete expression platform including prokaryotic and advanced eukaryotic systems (yeast, insect, HEK293/CHO) for high-quality protein production. Our industrial-scale manufacturing enables large-batch, stable output from milligram to gram scale to support global research and production.

- Eukaryotic expression system

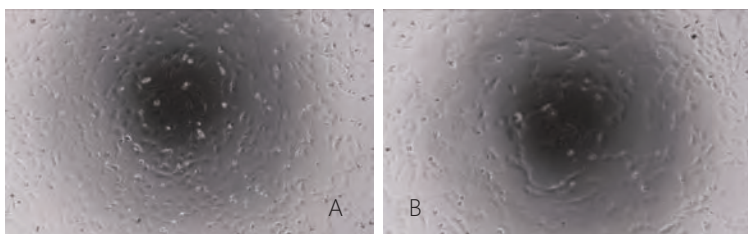


- GMP-grade production line



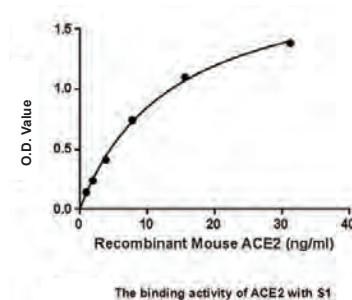
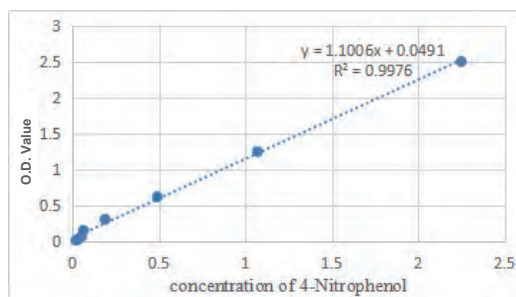
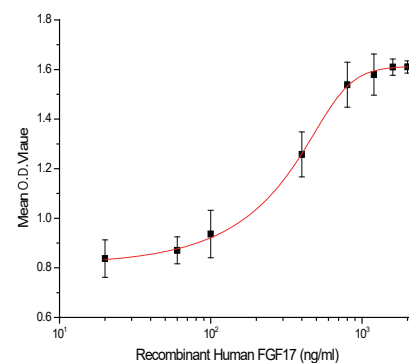
Protein Activity Validation

Cloud-Clone performs rigorous biological activity validation, including stimulation assays, binding assays, and enzyme activity assays, using standardized and repeatable methods. Activity data is clearly documented in the CoA and datasheet, ensuring reliable performance for cell culture, functional research and drug screening.



Cell proliferation of Balb/c 3T3 cells after stimulated with FGF17.
 (A) Balb/c 3T3 cells cultured in DMEM, stimulated with 1000 ng/ml FGF17 for 48h;
 (B) Unstimulated Balb/c 3T3 cells cultured in DMEM for 48h.

The biological activity of APC910Hu01 (FGF17 active protein) was detected by Balb/c 3T3 cell proliferation assay. Cell proliferation was detected using the cell counting kit (CCK-8).



The activity of APC374Hu01 (CES1 active protein) is determined by the hydrolysis of 4-nitrophenyl acetate (4-NPA) to 4-nitrophenol by CES1 protein.

ELISA is used to detect the interaction of APB886Mu01 (ACE2 active protein) and recombinant S1 protein.

Recommended Protein List (Part)

Catalog No.	Product Name	Catalog No.	Product Name
APA049Hu61	Active Interferon Gamma (IFNg)	EPC514Hu61	Eukaryotic Growth Factor Receptor Bound Protein 2 (Grb2)
APA049Mu01	Active Interferon Gamma (IFNg)	EPA929Hu61	Eukaryotic Retinol Binding Protein 4 (RBP4)
APA133Mu01	Active Tumor Necrosis Factor Alpha (TNFa)	EPA260Hu61	Eukaryotic Beta-2-Microglobulin (b2M)
APA045Hu61	Active Colony Stimulating Factor 2, Granulocyte Macrophage (GM-CSF)	EPG975Hu61	Eukaryotic Interferon Alpha 5 (IFNa5)
APA056Hu61	Active Interleukin 10 (IL10)	EPB686Hu61	Eukaryotic B-Cell Activating Factor (BAFF)
APA077Hu61	Active Interleukin 4 (IL4)	EPG458Hu61	Eukaryotic Cerebral Dopamine Neurotrophic Factor (CDNF)
APA105Hu01	Active Nerve Growth Factor (NGF)	EPA899Hu61	Eukaryotic Osteopontin (OPN)
APA133Mu61	Active Tumor Necrosis Factor Alpha (TNFa)	EPA128Hu61	Eukaryotic Tissue Inhibitors Of Metalloproteinase 2 (TIMP2)
APA134Hu01	Active Tumor Necrosis Factor Beta (TNFb)	EPB693Mu61	Eukaryotic Fatty Acid Binding Protein 4 (FABP4)
APA045Mu01	Active Colony Stimulating Factor 2, Granulocyte Macrophage (GM-CSF)	EPA399Hu61	Eukaryotic High Mobility Group Protein 1 (HMGB1)
APA049Hu01	Active Interferon Gamma (IFNg)	EPB693Hu61	Eukaryotic Fatty Acid Binding Protein 4 (FABP4)
APA092Hu61	Active Macrophage Inflammatory Protein 1 Alpha (MIP1a)	EPB979Hu61	Eukaryotic Hepcidin (Hepc)
APA050Hu61	Active Insulin Like Growth Factor 1 (IGF1)	EPA847Hu61	Eukaryotic Resistin (RETN)
APA100Hu02	Active Matrix Metalloproteinase 2 (MMP2)	EPA092Hu61	Eukaryotic Macrophage Inflammatory Protein 1 Alpha (MIP1a)
APA563Hu61	Active Interleukin 1 Beta (IL1b)	EPA539Hu61	Eukaryotic Myelin Basic Protein (MBP)
APA899Hu61	Active Osteopontin (OPN)	EPA685Hu64	Eukaryotic Cluster Of Differentiation 14 (CD14)
APE375Hu01	Active Lemur Tyrosine Kinase 3 (LMTK3)	EPA087Bo61	Eukaryotic Monocyte Chemotactic Protein 1 (MCP1)
APA077Hu01	Active Interleukin 4 (IL4)	EPB517Hu61	Eukaryotic Granulysin (GNLY)
APA049Ra01	Active Interferon Gamma (IFNg)	EPB225Hu62	Eukaryotic Cluster Of Differentiation 56 (CD56)
APA073Mu61	Active Interleukin 2 (IL2)	EPX274Ge61	Eukaryotic Nucleoprotein (NP)
APA079Hu61	Active Interleukin 6 (IL6)	EPA847Ra61	Eukaryotic Resistin (RETN)
APA143Ra61	Active Vascular Endothelial Growth Factor A (VEGFA)	EPB257Hu61	Eukaryotic Scavenger Receptor Class D Member 1 (SCARD1)
APA204Hu01	Active Growth Arrest Specific Protein 6 (GAS6)	RPA079Hu01	Recombinant Interleukin 6 (IL6)
APA079Mu61	Active Interleukin 6 (IL6)	RPA519Ra01	Recombinant Apolipoprotein A1 (APOA1)
APA448Mu01	Active Insulin (INS)	RPA071Ra01	Recombinant Interleukin 1 Alpha (IL1a)
APA563Hu01	Active Interleukin 1 Beta (IL1b)	RPA041Hu01	Recombinant Chemokine (C-X-C Motif) Ligand 1 (CXCL1)
APA799Mu01	Active Bone Morphogenetic Protein 7 (BMP7)	RPA223Ra01	Recombinant Interleukin 1 Receptor Antagonist (IL1RA)
APA899Ra61	Active Osteopontin (OPN)	RPA021Hu01	Recombinant Ciliary Neurotrophic Factor (CNTF)
APC534Hu61	Active Histidine Rich Glycoprotein (HRG)	RPA563Ra01	Recombinant Interleukin 1 Beta (IL1b)
APA071Hu01	Active Interleukin 1 Alpha (IL1a)	RPA371Hu01	Recombinant Interferon Gamma Induced Protein 10kDa (IP10)
APA073Hu61	Active Interleukin 2 (IL2)	RPA172Mu01	Recombinant Platelet Factor 4 (PF4)
APA079Hu01	Active Interleukin 6 (IL6)	RPA079Mu01	Recombinant Interleukin 6 (IL6)
APA079Ra61	Active Interleukin 6 (IL6)	RPA007Po01	Recombinant Angiogenin (ANG)
APA123Hu01	Active Transforming Growth Factor Alpha (TGFA)	RPA049Ov01	Recombinant Interferon Gamma (IFNg)
APA133Hu01	Active Tumor Necrosis Factor Alpha (TNFa)	RPA021Ra01	Recombinant Ciliary Neurotrophic Factor (CNTF)
APA560Hu02	Active Epidermal Growth Factor (EGF)	RPA041Ra01	Recombinant Chemokine (C-X-C Motif) Ligand 1 (CXCL1)
APB353Ge01	Active Advanced Glycation End Product (AGE)	RPA303Mu01	Recombinant Galectin 3 (GAL3)
APB700Hu01	Active Interleukin 17B (IL17B)	RPA847Mu01	Recombinant Resistin (RETN)
APA061Hu01	Active Interleukin 15 (IL15)	RPA095Hu01	Recombinant Macrophage Inflammatory Protein 3 Alpha (MIP3a)
APA064Mu01	Active Interleukin 18 (IL18)	RPA012Ra01	Recombinant S100 Calcium Binding Protein (S100)
APB547Hu01	Active Indoleamine-2,3-Dioxygenase (IDO)	RPA568Rb01	Recombinant S100 Calcium Binding Protein A11 (S100A11)

Citations of Cloud-Clone Proteins

Catalog No.	Product Name	Journal	IF	PMID/DOI
RPD090Mu01	Recombinant Hemoglobin Alpha 1 (Hb α 1)	<i>Nature</i>	64.8	37794190
RPD098Mu01	Recombinant Hemoglobin Beta (Hb β)	<i>Nature</i>	64.8	37794190
RPD208Hu01	Recombinant Complement Component 1, Q Subcomponent B (C1qB)	<i>Nature Nanotechnology</i>	47.6	37537273
APB317Mu01	Active Perforin 1 (PRF1)	<i>Nature Biomedical Engineering</i>	39.2	34873307
APE913Ra01	Active Sirtuin 3 (SIRT3)	<i>Signal Transduction and Targeted Therapy</i>	38.1	38744811
RPC174Mu01	Recombinant Neuregulin 4 (NRG4)	<i>Cell Metabolism</i>	32.4	38838641
RPA153Ra01	Recombinant Alpha-Fetoprotein (AFP)	<i>Advanced Materials</i>	32	38029784
RPB406Hu01	Recombinant Lipopolysaccharide Binding Protein (LBP)	<i>Immunity</i>	31.7	36854305
RPJ365Hu01	Recombinant Catechol-O-Methyltransferase (COMT)	<i>Immunity</i>	31.7	36854305
RPG369Mi01	Recombinant ATPase, Na ⁺ /K ⁺ Transporting Alpha 1 Polypeptide (ATP1a1)	<i>Immunity</i>	31.7	38395698
RPE672Hu01	Recombinant Fascin 2 (FSCN2)	<i>Nature Neuroscience</i>	29.9	23334578
RPJ784Mu01	Recombinant Succinate Dehydrogenase Complex Subunit A (SDHA)	<i>Cell Stem Cell</i>	25.2	29478844
RPU918Hu01	Recombinant WW And C2 Domain Containing Protein 3 (WWC3)	<i>Molecular Cell</i>	19.3	35429439
RPB317Mu01	Recombinant Perforin 1 (PRF1)	<i>ACS Nano</i>	18	40268689
RPB305Mu01	Recombinant Complement C4-B (C4B)	<i>Nature Communications</i>	17.7	36280666
RPA861Mu01	Recombinant Complement Component 3 (C3)	<i>Nature Communications</i>	17.7	36280666
APP549Mu01	Active Wingless Type MMTV Integration Site Family, Member 5A (WNT5A)	<i>Nature Communications</i>	17.7	37898598
RPG676Hu01	Recombinant Cereblon (CRBN)	<i>Nature Communications</i>	17.7	37495569
RPA711Hu01	Recombinant Heparanase (HPSE)	<i>Nature Communications</i>	17.7	38605050
APB317Hu02	Active Perforin 1 (PRF1)	<i>Nature Communications</i>	17.7	39890804
RPB762Mu01	Recombinant Inhibin Beta B (INHbB)	<i>Nature Communications</i>	17.7	40082402
RPA988Ra01	Recombinant Cytochrome P450 2E1 (CYP2E1)	<i>Advanced Science</i>	17.5	37283464
RPA049Ra01	Recombinant Interferon Gamma (IFN γ)	<i>Advanced Science</i>	17.5	36950739
RPA077Ra01	Recombinant Interleukin 4 (IL4)	<i>Advanced Science</i>	17.5	36950739
RPA060Ra01	Recombinant Interleukin 13 (IL13)	<i>Advanced Science</i>	17.5	36950739
RPE431Hu01	Recombinant Solute Carrier Family 16, Member 1 (SLC16A1)	<i>Advanced Science</i>	17.5	37541664
RPB354Hu01	Recombinant Aryl Hydrocarbon Receptor (AhR)	<i>Advanced Science</i>	17.5	39836604
RPB265Mu01	Recombinant Pancreatic Polypeptide (PP)	<i>Advanced Science</i>	17.5	40162859
RPC810Hu01	Recombinant Three Prime Repair Exonuclease 1 (TREX1)	<i>Advanced Science</i>	17.5	41117130
RPA042Ra01	Recombinant Colony Stimulating Factor 3, Granulocyte (GCSF)	<i>Bioactive Materials</i>	16.8	36185748
APA478Hu01	Active Cardiac Troponin I (cTnI)	<i>Chemical Engineering Journal</i>	16.7	10.1016/j.cej.2023.145525
RPA480Hu01	Recombinant Myoglobin (MYO)	<i>Chemical Engineering Journal</i>	16.7	10.1016/j.cej.2023.145525
RPQ653Hu01	Recombinant Defensin Beta 119 (DEFb119)	<i>Cell Reports Medicine</i>	16.2	36513070
RPA162Mu02	Recombinant Olfactomedin 4 (OLFM4)	<i>Nature Communications</i>	15.7	40467585
RPA143Rb01	Recombinant Vascular Endothelial Growth Factor A (VEGFA)	<i>Biomaterials</i>	12.8	37087981

Cloud-Clone Corp.

Original Manufacturer for Reagents, Samples and Services
 23603 W. Fernhurst Dr., Unit 2201, Katy, TX 77494, USA
 Tel: 001-832-538-0970 Toll free: 888-960-7402 (In the USA)

www.cloud-clone.com www.cloud-clone.us